



KEN'S KIDS

at the Campanile!



Field Trip Guide

This program is generously sponsored by:

Jan & Gene Degner
The Judy Ken Ozinga Charitable Fund
Martin Ozinga III



NORTHERN
ARTS
COUNCIL



Wisconsin Public Service

Dear Educators,

Welcome to ***KEN'S KIDS at the Campanile!*** We are thrilled to present *B2wins* to you and your students.

Growing up in the violent, impoverished slums of Rio De Janeiro, the Twins began playing classical music on violins their father handmade. They used music as an escape from their reality and began teaching others in their neighborhood to do the same. After being featured on National Public Radio, the Twins were invited to the US on full ride music scholarships in 2008.

Their life story makes them uniquely qualified to speak to topics like developing your inner superhero, being you-nique, anti-bullying, and overcoming hardships. B2wins (pronounced B-Twins) utilize music, humor, audience interaction, and participation, and are able to connect with audiences in never before seen ways. Their magnetic personalities and sincerity, coupled with engaging showmanship, create a dynamite package that is equal parts fun and life-changing. Using their story of overcoming extreme adversity through positivity, the Twins have inspired thousands of all ages and backgrounds around the world. Get ready for an energetic, high-flying, confetti-launching, break-dancing, costume covered, uplifting, bright, colorful, fantasy-filled ride. This is one show neither your student or you will forget.

After performing over 1,000 shows around the world the past decade, the B2wins continue to cultivate a loyal fan base wherever they perform. From hip-hop heads to jazz aficionados, pop enthusiasts and ravers, rockers to reggae fans, all find common ground together with the B2wins. Using music as the tool, the B2wins are on a mission to make the world smile again.

We look forward to inspiring and educating your students through the arts on October 6, 2023 at the Campanile Center for the Arts!

See you then!

The program is under 1-hour in length.

FIELD TRIP GUIDELINES

Below are simple guidelines for Ken's Kids Field Trips to the Campanile Center for the Arts. Please read carefully and contact us at (715)356-9700 if you have questions.

Reservations: All field trip admissions are to be made in advance. Please do not bring more than the number of seats reserved. Performances are expected to sell out and we will not be able to accommodate an increase in numbers at the last minute. All patrons, including teachers and chaperones, must have a reservation in order to attend this performance.

Payment: Payments must be made, in full, 2 weeks prior to the day of the show or we may not be able to accommodate your reservation. An invoice will be given to you at the time your reservation is made if payment does not accompany it. Once you have paid in full, we will send a confirmation. The Campanile reserves the right to cancel unpaid reservations.

Transportation: The Campanile can accommodate school buses, vans and cars. There is not a charge for parking. All buses, vans and cars must comply with directions provided by on-site staff.

Arrival: Students should be dropped off at the main entrance of the Campanile. Vehicles will then be directed to the designated parking area.

Seating: Students are seated as they arrive in areas that have been assigned to each school.

Restrooms: Please seat your entire group,

before taking restroom breaks so that you can be easily found. Students MUST be accompanied by adult chaperones when going to the restroom.

Chaperones: Please make sure that your chaperones are interspersed among your students, and that they are prepared for the day's responsibilities. Please discuss restroom visits, emergencies, behavior, etc. with your chaperones prior to arrival.

Behavior: Students and teachers are encouraged to enjoy the performances, applaud and express enthusiasm in a manner that is appropriate for the performance, yet not disruptive for others. We request that all phones, tablets and any other electronic devices be completely turned off or on silent mode during the performance. No student can leave the auditorium without an accompanying chaperone.

Departure: Performances last approximately one hour. Upon conclusion of the performance, classes will be dismissed to the designated parking area to board their buses and return to school.

Directions: The Campanile Center is located on the corner of Flambeau and Milwaukee Streets in downtown Minocqua.

From the South

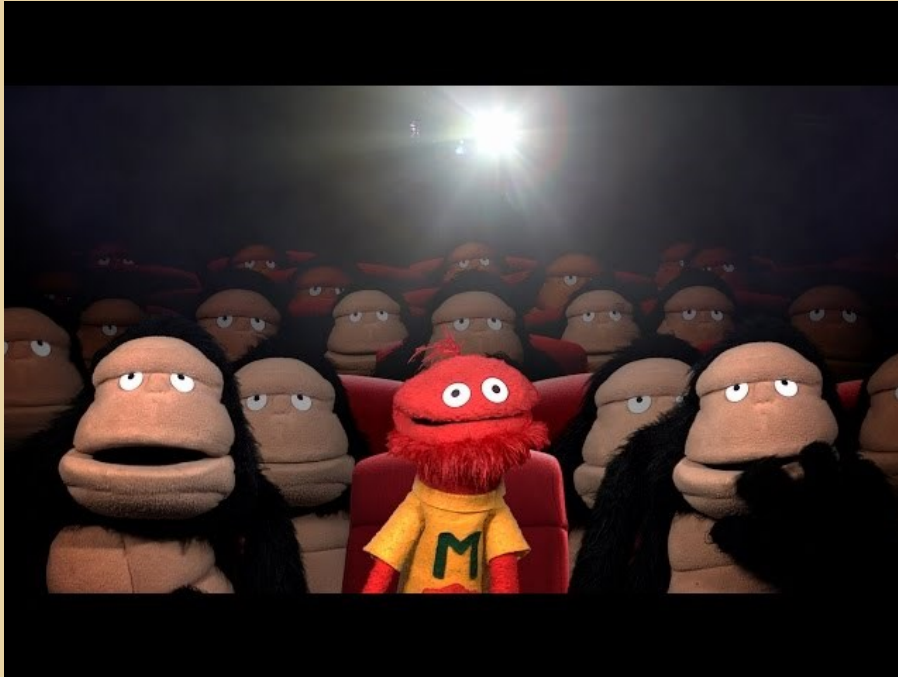
Take US Hwy 51 North to Minocqua. Just past the Lake Minocqua bridge, take the first left onto Park Avenue (The Boat House restaurant is on the corner). Travel one block and turn right onto Flambeau Street. Travel two blocks.

From the North

Take US Hwy 51 South to downtown Minocqua. At the intersection of US Hwy 51 and West Front Street, go straight at the stoplights. Travel one block and take the next right onto West Milwaukee Street. Travel one block.

THEATER ETIQUETTE

*A live performance is a unique experience shared between performers and audience members. Unlike television or movies, audience distractions can disrupt the performers, production and audience. Many students have never attended a live performance and don't know how to handle themselves at such an event. Before you arrive at the Campanile Center, please review the following information with your students and chperones, and help **Ken's Kids** create a meaningful experience for all.*



- Arrive early. The show will not be held for latecomers.
 - Food, drink, candy, gum, etc. is not permitted in the theater.
 - Silence or turn off all electronic devices. We encourage you to share your Ken's Kids experience at the Campanile Center via social media, but please refrain from doing so or texting during performance; the glow from your device is distracting.
 - Photography and video/audio recording of any kind is not allowed in the theatre during the performance.
 - Respect the theater. Remember to keep your feet off of the seats and avoid bouncing up and down.
 - When the house lights dim, the performance is about to begin. Please stop talking at this time.
 - Talk before and after the performance only.
- Remember, the theatre is designed to amplify sound, so the other audience members and the performers on stage can hear your voice!
 - Use the restroom before the performance or wait until the end.
 - Appropriate responses such as laughing and applauding are appreciated. Pay attention to the artists on stage—they will let you know what is appropriate.
 - As you enter and exit the theatre, remember to walk and stay with your group.
 - Open your eyes, ears, mind and heart to the entire experience.
 - **And most importantly—enjoy yourself!**